

## PP-162

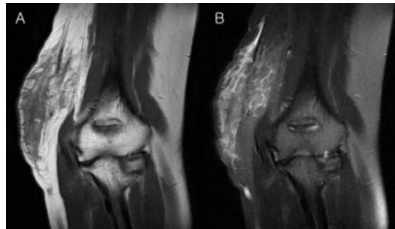
### Bilateral Kimura's disease of the both elbows: positron emission tomography/computed tomography findings

H. Cho<sup>1</sup>, J. Kim<sup>2</sup>

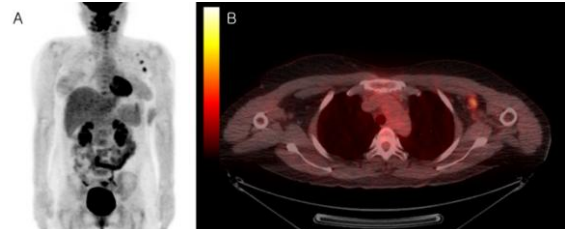
<sup>1</sup> Gwangju Veterans Hospital, Gwangju, Korea Republic

<sup>2</sup> Busan Veterans Hospital, Busan, Korea Republic

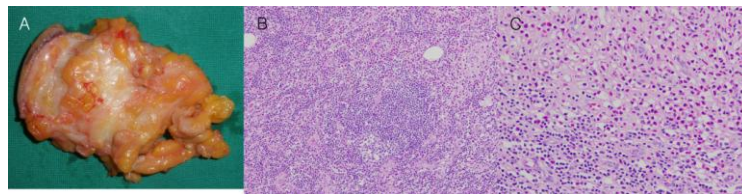
Kimura's disease is a very rare, benign, lymphoproliferative inflammatory disorder of unknown etiology. A 38 year-old woman had soft tissue masses in her both elbow with multiple lymphadenopathy, which was diagnosed as Kimura's disease accompanied with multiple lymphadenopathies by histopathologic evaluation. We report the imaging finding with fluorine-18 fluorodeoxyglucose positron emission tomography/computed tomography (18F-FDG PET/CT) and MRI, clinical findings and histopathologic features with a review of the literature.



**Figure 1.**



**Figure 2.**



**Figure 3.**